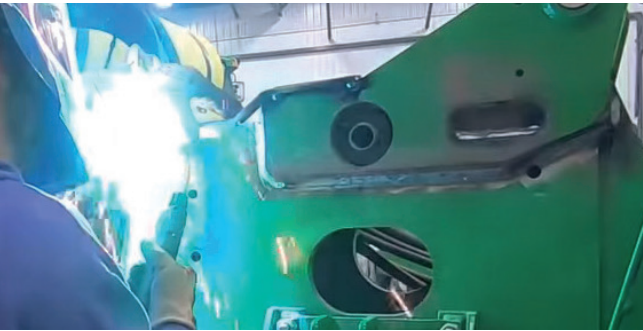


EASY INSTALLATION

Our kits are designed to allow for easy installation on your existing planter on the farm or at the dealership. Most customers find that a weight distribution kit is the most beneficial upgrade they have made to their machine.



Although some competitors offer bolt-on style kits, our kits are designed as weld-on to ensure maximum performance, extreme strength and long-term durability. For the system to relieve meaningful weight from the center of the planter, the force transmitted through the hydraulic cylinder is an order of five to ten times the magnitude of the actual weight relieved.

Competitors' bolt-on kits rely on hardware to clamp and point load those forces to the frame. These bolt-on kits have downsized features, such as smaller cylinder bores and thinner steel plating. Most of the time they do not advertise kit specifications or the amount of weight their kits can transfer.

Our weld-on kits allow the transferred forces to be spread out over larger areas on the frame. This results in less stress and fatigue on the planter frame and eliminates the fear of hardware coming loose over time. Our kits ensure a maximum performing, worry-free system that will last the life of your planter.

If you decide to invest in upgrading your planter, be sure the kit you choose provides significant results and is worth your time and money. In most cases, our weld-on kits can be installed in the same amount of time or less than our competitors' bolt-on kits.



PLANTER FRAME WEIGHT DISTRIBUTION KITS

CONTACT

515-370-1068
INFO@LDMAGSERVICES.COM

401 W MCKINLEY STREET
PO BOX 307
JEFFERSON, IOWA 50129

LDMAGSERVICES.COM  

- ✓ REDUCE COMPACTION
- ✓ IMPROVE ROW UNIT RIDE QUALITY
- ✓ LOW COST, EASY INSTALLATION

MODEL YEAR 2023

SALES BROCHURE

Kits use hydraulic cylinders and a control system to transfer excessive center fill weight out to the wings, eliminating compaction and helping to maintain ride quality and depth for wing rows.

Constant flow is supplied to the control valve, which regulates pressure out to the cylinders. Each system is designed so that the planter still maintains its full up/down flex range of motion. Two types of control systems are available.

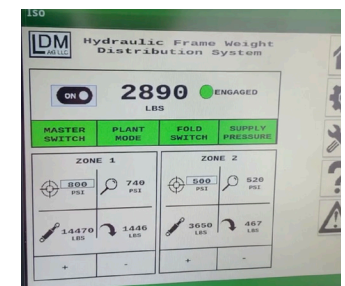
1 MANUAL/SETPOINT KITS

This is a base kit where all pressure adjustments are manually set from the valve on the planter. This system requires tie-in to power beyond hydraulics on the tractor or SCV that stays in constant during planting. An electrical interface allows for the system to be disabled during folding/transport.



2 ISOBUS/SETPOINT KITS

This kit features an ISOBus interface that allows for in-cab monitoring and control. This kit still functions as a setpoint system, but monitoring and pressure adjustments can be made on the fly from the 2600/4600 ISO display.



MODEL	CONFIGURATION	INSTALL TIME	CYLINDER SIZE	TRANSFER PER WING	TOTAL TRANSFER	
JOHN DEERE	1790/I795	12-13 HOURS	3" BORE	UP TO 3,100 LBS	UP TO 6,200 LBS	
	1790/I795	12-13 HOURS	3" BORE	UP TO 1,800 LBS	UP TO 3,600 LBS	
	1770NT/I775NT	12-13 HOURS	3" BORE	UP TO 1,600 LBS	UP TO 3,200 LBS	
	1770NT/I775NT	12-13 HOURS	3" BORE	UP TO 1,000 LBS	UP TO 2,000 LBS	
	1770NT/I775NT	24-25 HOURS	4.25" BORE	UP TO 2,200 LBS	UP TO 4,400 LBS	
	DB44	24R22	16-17 HOURS	3" BORE	UP TO 1,200 LBS	UP TO 2,400 LBS
	DB60	24R30 - 36R20 - 47R15	20-21 HOURS	5" BORE	UP TO 2,000 LBS	UP TO 4,000 LBS
	DB66	36R22	20-21 HOURS	5" BORE	UP TO 1,800 LBS	UP TO 3,600 LBS
	DB80	32R30 - 48R20	20-42 HOURS	5" BORE	UP TO 2,400 LBS	UP TO 4,800 LBS
	DB88/DB90/DB120	48R22 - 36R30 - 48R30	40-42 HOURS	5" BORE	UP TO 2,000 LBS	UP TO 4,000 LBS
CASE IH	1250/I255	12-13 HOURS	3" BORE	UP TO 1,600 LBS	UP TO 3,200 LBS	
	1250/I255	12-13 HOURS	3" BORE	UP TO 1,000 LBS	UP TO 2,000 LBS	
	1250/I255	24-25 HOURS	4.25" BORE	UP TO 2,000 LBS	UP TO 4,000 LBS	
WIL-RICH - KINZE - AGCO	9812VE	12 HOURS	3" BORE	UP TO 2,050 LBS	UP TO 4,100 LBS	
	9816VE	12 HOURS	3" BORE	UP TO 1,150 LBS	UP TO 2,300 LBS	
	9824VE	12 HOURS	3" BORE	UP TO 1,050 LBS	UP TO 2,100 LBS	
	3800	12 HOURS	3" BORE	UP TO 1,670 LBS	UP TO 3,340 LBS	
	10K	12 HOURS	3" BORE	UP TO 1,300 LBS	UP TO 2,600 LBS	

PUSH BACK...AGAINST PLANTER COMPACTION

ALSO COMING SOON FOR SPRING 2023

CASE IH 1240/1245 JOHN DEERE 1890/1990 - 1720/1725 - 2510



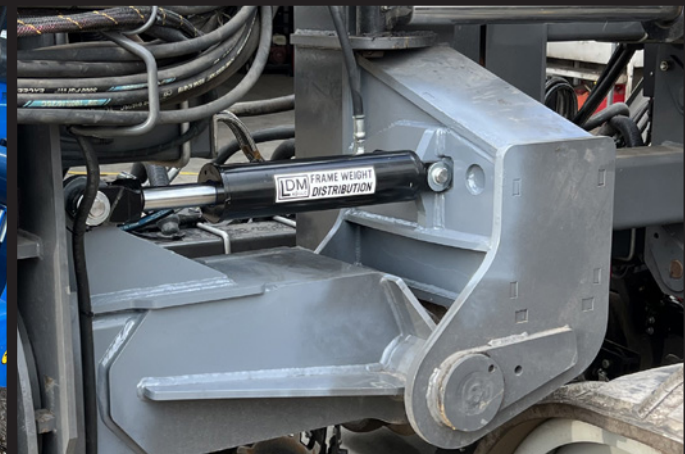
KINZE 24R30 3800



CASE IH 24R30 1250/1255



JOHN DEERE 31R15 1790/1795



WIL-RICH 36R20 10K



JOHN DEERE 24R30 1770NT/1775NT



JOHN DEERE 16R30 1770NT/1775NT